



UNIVERSITY *of* LIMERICK

O L L S C O I L L U I M N I G H

Information Sheet for Partners & Exchange Students 2019/2020



www.ul.ie/international



/ULInternational



@InternationalUL



/internationalul



ulinternational



UNIVERSITY of LIMERICK
OLLSCOIL LUIMNIGH

LIMERICK
IRELAND

Erasmus+ ID: IRL LIMERIC01

International Education Division
EO-020, Main Building
University of Limerick
Plassey Park Road
Castletroy
County Limerick
V94 T9PX
Ireland

Contact Information

Erasmus+ Institutional Coordinator: Ms Madeline Molyneaux

Telephone +353 61 202304 Email: madeline.molyneaux@ul.ie

Contact for Incoming Students: Ms Danielle McNamara

Telephone: +353 61 213133 Email: incoming.erasmus@ul.ie

Contact for Outgoing UL Students: Ms Herveline Roche

Telephone: +353 61 202353 Email: outgoing.erasmus@ul.ie

Contact for Outgoing UL Students: Ms Lisa Fitzgerald

Telephone: +353 61 234654 Email: outgoing.erasmus@ul.ie

Our Nomination Procedure

Deadlines for Nomination:

Full Academic Year / Autumn: 01st May

Spring: 01st October

Nominations are to be emailed to the Incoming Erasmus Administrator by the International Office at the Home University.

Nominations should include the students name, email address, area of study and the Erasmus code of the Institution.

Our Application Procedure

Deadlines for Application:

Full Academic Year / Autumn: 31st May

Spring: 31st October

Once the student has been officially nominated, they will receive email with an application link and a guide to the online application procedure. Once students have completed their application, they will be e-mailed with further information regarding accommodation, modules, etc.

Link to UL's Book of Modules: <https://bookofmodules.ul.ie/>

Modules:

A normal semester load at the University of Limerick is 30 ECTS credits. Most modules have a credit weighting of 6 ECTS so students should take five modules per semester. Erasmus students are required to take at least three modules from within the subject area of the Erasmus+ agreement and may take a further two modules outside this subject area. Acceptance on these modules is subject to academic prerequisites, timetabling constraints and number of students enrolled.

Modules offered in the area of Psychology, Sports Sciences and Journalism are subject to restrictions: only students nominated within the relevant subject areas may take part in those modules.

ECTS Credits:

The normal course load at the University of Limerick is 5 modules per semester. Erasmus students are limited to a maximum of 5 modules and a minimum of 3 modules per semester. Most UL modules are worth 6 ECTS credits.

Academic Information

Learning Agreement Requirement:

Students are required to send their Learning Agreement directly to their academic coordinator at the University of Limerick for approval of modules. Details of whom their academic coordinator at the University of Limerick will be sent to the students after their nomination has been processed.

Language Requirements:

The language of instruction and assessment for all programmes is English (*with the exception of foreign language modules, e.g. French, German, Spanish, Japanese*). A B2 level of English is required but we do not require a certificate.

English as a Foreign Language course is available to Erasmus students as a module.

The Language Centre of the University of Limerick offers this intensive language course for 3 days during the week prior to the start of the semester. **The tuition fee is €250.**

Special Needs & Disabilities Information:

The student will be asked when completing their application if they have any special needs or requirements. The International Office will then provide the contact information of our Disability Services Department will be provided to any student who requires it.

Our Disability Services Department will then confirm with the student the supports that are available at UL. The home university must confirm that funding will be provided to facilitate any/all supports, for example, scribes, transport, carers/assistants, hire or purchase of equipment etc.

Insurance requirements for incoming exchange students:

All EU students are eligible to avail of full public health care services in Ireland, on presentation of a European Health Insurance Card (EHIC). Additional private health care can be obtained from the following Irish Health Insurance companies: VHI (<http://www.vhi.ie/>) or Laya Healthcare (<http://www.layahealthcare.ie/>) or a special rate offered by Odon Insurance (<https://www.studyandprotect.com/unilanding.aspx?AspxAutoDetectCookieSupport=1>)

Immigration information for incoming exchange students:

All non-EU students coming to the University of Limerick are required by the Irish Department of Justice (<http://www.justice.ie/>) to register with the local Gardaí (Irish police). VISA applications should be made through the Irish Embassy in the home country. **Immigration fee is €300.**

Academic transcripts:

All transcripts will be printed on University of Limerick transcript paper. They will be sent to the student's home address within 5 weeks of publication of results.

Autumn Semester

Orientation

2-6 September 2019

Classes

9 September - 29 November 2019

Examinations

7 - 20 December 2019

Results

23 January 2020

Spring Semester

Orientation

14 - 18 January 2020

Classes

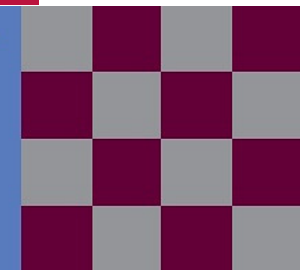
21 January - 24 April

2020 Examinations

29 April - 18 May 2020

Results

22 June 2020



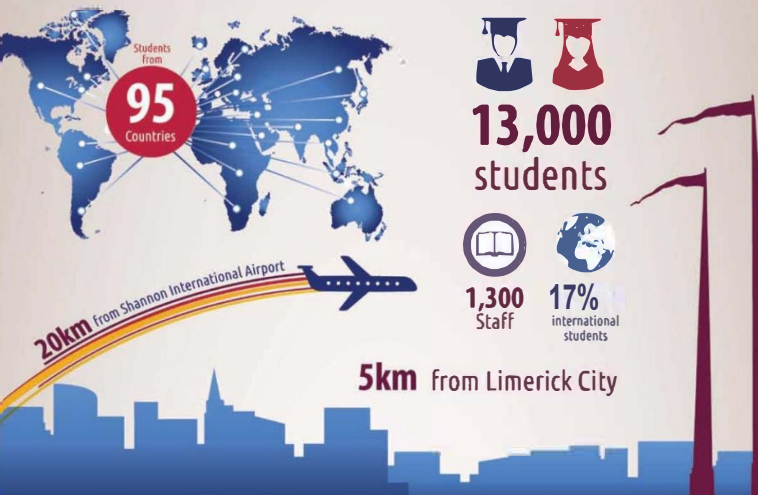


UNIVERSITY of LIMERICK

OLLESCOIL LUIMNIGH

#StudyAtUL

WHY CHOOSE THE UNIVERSITY OF LIMERICK?



LIVE MORE

MORE ON-CAMPUS ACCOMMODATION THAN ANY OTHER UNIVERSITY IN IRELAND

5 Purpose built student villages

Capacity of over **2,400** students

24 HOUR ON-CAMPUS SECURITY

A friendly, safe & welcoming campus



ONE OF THE WORLD'S TOP GREEN UNIVERSITIES

The results are part of the GreenMetric ranking of world universities which ranked UL as number 29 among the world's top 300 universities.

30



29



UL Sport Arena

One of the largest sports & events facilities in Ireland.



State of the art facilities and playing pitches.

Ireland's Largest All-Weather Floodlit Park



Arena's Cardio-Fitness Centre

One of the largest and most comprehensive gyms in Ireland - over

100 pieces of equipment.

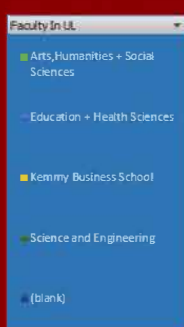
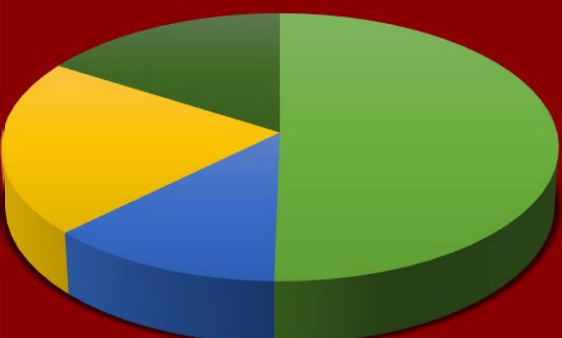


N.S.C.C - The National Strength and Conditioning Centre

A state of the art training facility situated within the University Arena Sports Complex. It is home to numerous teams including Munster Rugby.

over **70** Clubs and Societies

Erasmus Incoming Students By Faculty 2017/18



LEARN MORE



Over **77** UNDERGRADUATE PROGRAMMES

Over **90** POSTGRADUATE PROGRAMMES

ACROSS FOUR FACULTIES:

ARTS, HUMANITIES AND SOCIAL SCIENCES

KEMMY BUSINESS SCHOOL

EDUCATION AND HEALTH SCIENCES

SCIENCE AND ENGINEERING

FREE ACADEMIC SUPPORT CENTRES

Mathematics, Science and Writing Centre
Free one-to-one support available for all students

5 QS STARS

QS WORLD UNIVERSITY RANKINGS

EMPLOYABILITY ★★★★★
FACILITIES ★★★★★
TEACHING ★★★★★
INNOVATION ★★★★★
ENGAGEMENT ★★★★★
INTERNATIONALIZATION ★★★★★

LARGEST ERASMUS PROGRAMME IN IRELAND



#StudyAtUL

How to Find Us

Shannon Airport: ~25 km from Limerick

Bus: There is a bus service from Shannon Airport to Limerick City Train station approximately every 30 minutes. Please visit the Bus Éireann website for up-to-date information: <http://www.buseireann.ie/>

Taxi: from Shannon airport to the University of Limerick vary a taxi will cost from 35–40 Euro. Book ahead with plasseycabs@eircom.net

Dublin Airport: ~200 km from Limerick

M7 Express: (*change at the RED COW LUAS for Limerick)

<http://www.dublincoach.ie/services/dublin-coach-journey-planner.php>

Bus Éireann Expressway:

<http://www.buseireann.ie/inner.php?id=243>



*Both Bus services collect passenger directly across from the arrivals exit of the airport.



Living in Limerick

On-Campus Accommodation:

Once the Erasmus placement is confirmed, the International Education Division will forward an on-campus accommodation form.

Please note accommodation cannot be booked until the placement at UL has been confirmed. On-campus accommodation is limited and is allocated on a first come first served basis.

The closing date for applications are available from

<http://www.studentliving.ul.ie/>

There is a non-refundable Booking Fee on application of €50, with a Damage Deposit due of €200. Application for on-campus accommodation should be returned to: accommodation@ul.ie

For more information on accommodation, see:

<http://www.studentliving.ul.ie/>

Off-Campus Accommodation:

Please visit [http://www.studentliving.ul.ie/index.jsp?](http://www.studentliving.ul.ie/index.jsp?p=116&n=141)

[p=116&n=141](http://www.studentliving.ul.ie/index.jsp?p=116&n=141) for a list of available off-campus housing.

As with the booking of any private accommodation, students need to be aware of fraudulent persons purporting to be Landlords/landladies on Facebook, Internet sites or other media.

Do not pay money to persons unless you are sure that they are genuine. You are advised to view any properties before paying a deposit.



UNIVERSITY of LIMERICK
OLLSCOIL LUIMNIGH





Information provided in this information sheet is accurate as of 25 June 2018



UNIVERSITY of LIMERICK
OLLSCOIL LUIMNIGH

**LIMERICK
IRELAND**