



國際商學院
INTERNATIONAL BUSINESS SCHOOL



Factsheets 2019/2020

BEIJING FOREIGN STUDIES UNIVERSITY
International Business School

Backgrounds

北京外國語大學

International Business School

International Business School (Abbreviated as IBS) was established in 2001 and has developed into the most internationalized business school, with 1200 Chinese students and 500 international students from over 80 countries studying together.

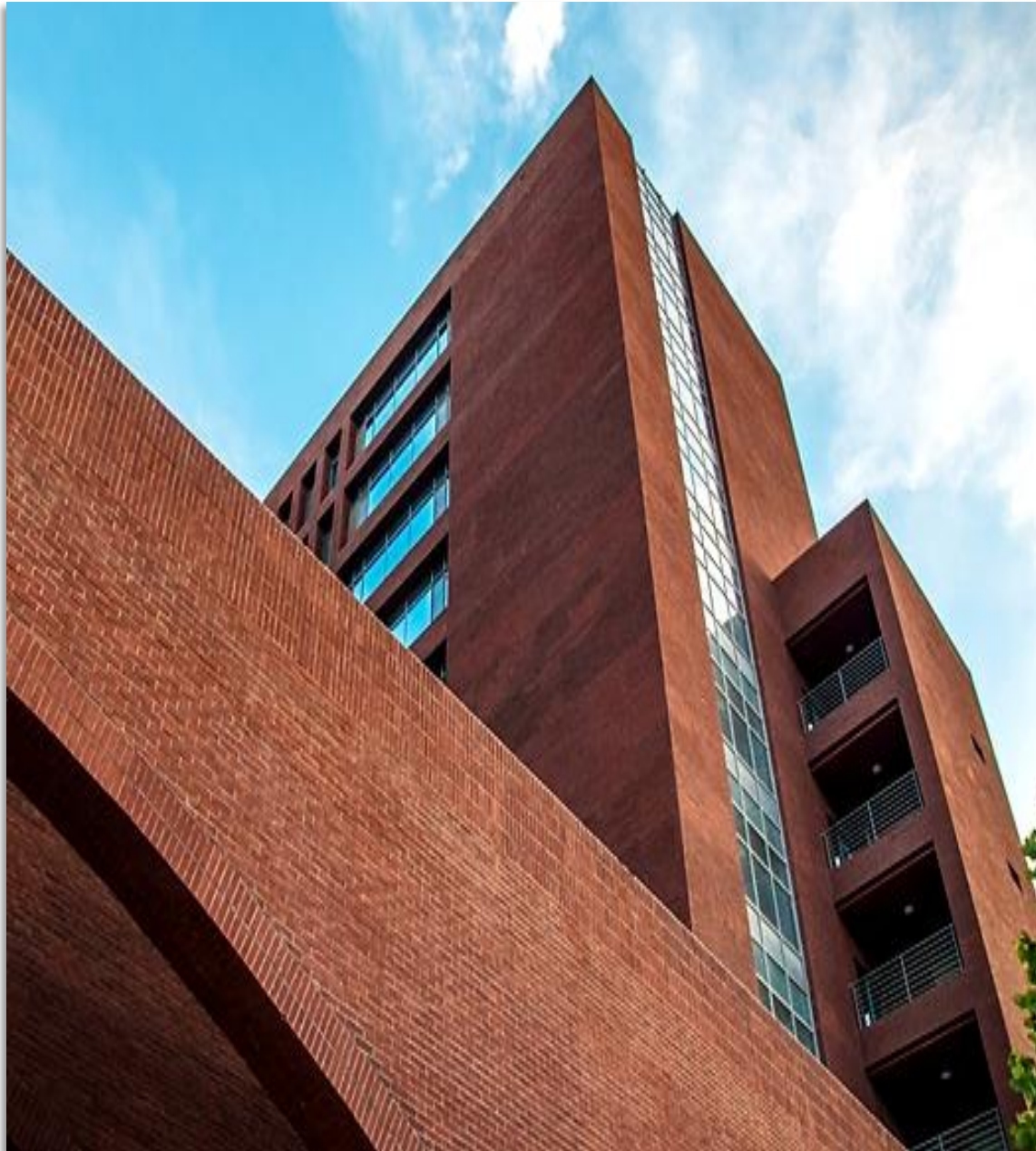
We offer internationalized business curriculum coupled with language study. The international program is instructed in English, no mandarin required. Students will learn business and mandarin simultaneously. Or, you may choose the program instructed in mandarin provided on sufficient language proficiency.

Beijing Foreign Studies University

Beijing Foreign Studies University (BFSU) is a key university directly affiliated with the Ministry of Education (MOE) of the People's Republic of China. Founded in 1941, BFSU is the first institution specializing in foreign language studies. It has over 400 ambassadors and 100 vice ministers graduated from BFSU. BFSU is known as the 'cradle of diplomats' in China. At present, BFSU is teaching the largest number of languages (98) and offering other international subjects such as business and diplomacy.

Features

- **Curriculum** -- Internationalized curriculum coupled with Chinese studies (Chinese language, culture, economics, business, laws and social studies)
- **Faculty** -- International faculty and internationally experienced Chinese professors: offering both the international and Chinese perspectives on contemporary business issues
- **Immersion Week** -- Visit Fortune 500 companies and top Chinese companies every semester
- **Internships and Employment** -- Opportunities in multinational companies and organizations in China
- **Culture Diversity** -- students come from over 60 countries, being able to develop cross-cultural communication skills in everyday life
- **Building Local Networks** -- Full Integration with the Chinese students: sitting in the same class with the top Chinese students, building your future social network
- **Homestay & Extended Family Experience** -- Opportunities in living with local Chinese families and immersing yourself into the real Chinese community
- **Scholarship** -- available for excellent students.



Locations



Beijing Campus

9th Floor, International Building,
No.19 Xisanhuan Avenue, Beijing Foreign Studies University
100089, Beijing, China

Foshan Campus

6th Floor, East Tower, Xin Rui Plaza
No.10 Ling Nan Avenue, SCI BFSU
Le Cong Town, Shun De District, Foshan City
528315, Guangdong, China

Contacts

Admission Office

Add: Rm. 905, IB Building, West Campus

Email: solbridge@bfsu.edu.cn

Tel: +86-10-8881 6563

Academic Office

Add: Rm. 921, IB Building, West Campus

Email: teaching-ibs@bfsu.edu.cn

Tel: +86-10-8881 6844

Student Service Office

Add: Rm. 981, IB Building, West Campus

Email: ibs-service@bfsu.edu.cn

Tel: +86-10-8881 8230

Overseas Students Affairs Office

Add: Rm. 201, Student Center, East Campus

Email: wscxcb@bfsu.edu.cn

Tel: +86-10-8881 0671

How to Apply



Academic Calendar—Beijing/Foshan Campus

Fall semester 2019/2020	
Application Deadline	30 th June, 2019
Registration	28 th and 29 th August, 2019
Class starts	1 st September, 2019
Mid-autumn Festival	13 rd -15 th September, 2019
National Holiday	1 st – 7 th October, 2019
Examination weeks	23 rd December ,2019—3 rd January, 2020
Winter Break	13 rd January, 2020

Academic Calendar—Beijing/Foshan Campus

Spring Semester 2020	
Application Deadline	30 th December, 2019
Registration	26 th and 27 st February, 2020
Class starts	2 nd March, 2020
Tomb-sweeping Day	4 th —6 th April, 2020
Labour Day	1 st May, 2020
Dragon Boat Festival	7 th -9 th June, 2020
Examination weeks	22 rd June— 3 rd July, 2020
Summer Break	13 rd July, 2020

Experience China, Experience World

- ◆ Business/Culture Study Tour in China
- ◆ Business/Culture Study Tour in the “Belt & Road” Countries
- ◆ Volunteer Mandarin Teaching Program
- ◆ Homestay Language Partner for Mandarin Study

To be an international business school that bridges China to the rest of the world by providing a platform of learning for future business leaders and practitioners through shared understanding of global business practices, culture and language.

With the Belt & Road initiative, we believe there will be more economic and business cooperation among the B&R countries. Students should learn more about those countries, including the economy, business, and culture etc. Thus, we initiate a series of short-term study tours to help more students gain the international experience in China and many other B&R countries.



Accommodation—Beijing Campus

On- campus	Type of room	Type of lodging	Price (CNY)	Equipped with
	White Building (West campus)	Single room	60/day	--
		Single room	70/day	Private Bathroom
		Double room	40/day	--
	Guojiao Building (East Campus)	Single room	90/day	Private Bathroom
		Single room	70/day	--
		Double room	40/day	--
	NO.1 Building (East campus)	Double room	30/day	--

Estimated Living Expenses—Beijing Campus

Item	Per Student
Meals	CNY 900/month
Books	CNY 1,000
Visa	CNY 500/ semester or CNY 900/year
Dormitory Deposit ¹	CNY 400
Personal Expenses ²	CNY 1500/month
Internet Service ³	CNY 120-180/month
Electricity ⁴	CNY 1/unit
Health Insurance	CNY 300/semester or CNY 600/year
Water	--

Deposit¹: If no damages are caused, it will be refunded when you check out the dorm.


Personal Expenses²: Personal expenses include local transportation, laundry and personal items. These expenses may vary based on an individual's lifestyle.

Internet Service³: For those living on campus, you have to call the BFSU internet guy to let him come to your room and install a router. The number is 13426315186.

Electricity⁴: Each room in the on campus dormitories will be provided 40 units per month for free, you will need to pay for the exceeded electricity units.

SIM card

China Mobile、*China Unicom* and *China Telecom* are top 3 telecommunications service providers in Mainland China. Please bring your passport when you buy a SIM card. Please note that mobile phones from Sony, HTC and a few other brands may at times not be compatible with Chinese SIM cards. In any case, you can get a mobile phone cheaply in China for about 600 RMB. The SIM cards usually come with an included monthly allowance for mobile internet, phone calls and.

We also suggest you install the *Wechat app*  on your mobile phone before coming to China. It is the equivalent to Whatsapp (which at times is blocked in China – so ask your most important contacts abroad to install Wechat also).



中国移动通信
CHINA MOBILE



China
unicom 中国联通

 中国电信
CHINA TELECOM
世界触手可及

Arrival in Beijing

Airport pick up

- The University representative will be holding a **BFSU sign** at the **Exit for International Arrival at Terminal 3**. Please inform us of your flight details and arrival date in advance.
- BFSU will provide free airport pick up on registration days. The pick up buses will leave the airport to the campus on the following time schedule:
 - 1st day of registration, the school bus will leave the airport at 10:30; 14:00; and 19:00.
 - 2nd day of registration, the school bus will leave the airport at 10:30; and 14:00.

Arrive on you own

If your arrival date and time **does not** correspond with any of the preceding dates, you may choose one of the following options:

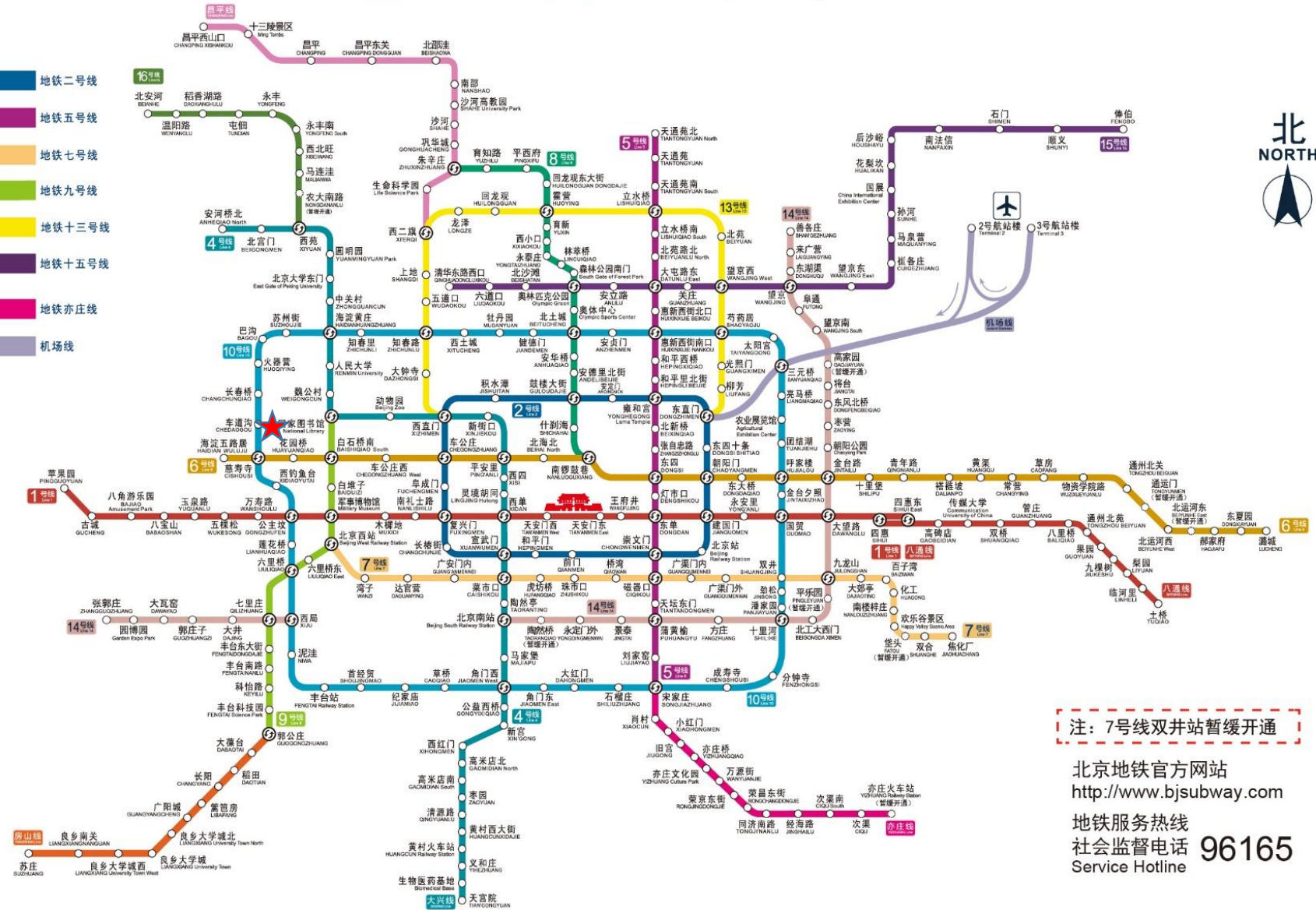
- 1) You may take the airport shuttle bus - **line 4**. Shuttle bus price varies from CNY 15 to CNY 24 depending on the distance. Take the bus to **Gong Zhu Fen** and get off at the **Su Zhou Qiao**. The price is CNY 24. This stop is only 300m away from the BFSU campus. If you are not confident in your Chinese speaking skills, or you have a lot of luggage, this may not be the option for you.
- 2) Follow the signs in the airport that read “Taxi” (level B1) to the official Taxi Stand. You may print out the University address and show it to the driver (taxi drivers seldom speak English). All taxi fares are calculated and displayed by electronic meter and it will cost about CNY 150 to take a taxi from the airport to BFSU. Remember to take the receipt (fa piao) to verify the bill. Do not accept a ride from strangers, or unmarked “taxis” - **only take a taxi at the taxi stand**.

北京地铁线路图

Beijing Subway Map

图例:
Legend

- 地铁一号线
- 地铁八号线
- 地铁四号线
- 地铁六号线
- 地铁八号线
- 地铁十号线
- 地铁十四号线
- 地铁十六号线
- 地铁昌平线
- 地铁房山线
- 地铁二号线
- 地铁五号线
- 地铁七号线
- 地铁九号线
- 地铁十三号线
- 地铁十五号线
- 地铁亦庄线
- 机场线
- 换乘站



注：7号线双井站暂缓开通

北京地铁官方网站
<http://www.bjsubway.com>
地铁服务热线
社会监督电话 96165
Service Hotline

Visa



- a) According to Chinese law, students holding an **X1 visa must apply for a Residence Permit within 30 days of entry into China.** Not adhering to this regulation will be considered as illegal residents and be liable to a fine of a maximum amount of CNY 10000. Or being deported for illegal residence. Students with an X1 visa should contact the Overseas Students Affairs Office upon arrival to conduct the Residence Permit application immediately.
- b) All students holding an X1 visa must have a physical examination done. If you cannot have the examination done before leaving your home country, you may have it done in Beijing or in Foshan. The cost is about CNY 400. Any physical examination is only valid for 6 months. Your physical examination and laboratory test results must be notarized. When you arrive at BFSU you must go to the hospital to have your physical examination results verified. If all documents are in order, the fee will be CNY 60.

Health Insurance

All foreign students who study in China for one or more semesters have to purchase Medical and Accidental Insurance. Insurance can be purchased from China Ping'an Insurance Company upon registration or purchase online before arrival. (<http://www.lxbx.net/index-e.html>). The fee is CNY 300 for one semester, or CNY 600 for the whole year.

Students without medical insurance can not be enrolled as international students at BFSU.





國際商學院
INTERNATIONAL BUSINESS SCHOOL

Welcome to IBS BFSU

Contact us:

Email: solbridge@bfsu.edu.cn/ibsbfsu.solbridge@gmail.com

Tel: +86-10-8881 6563/8881 6763

Website: <http://solbridge.bfsu.edu.cn>

Facebook: IBS.BFSU