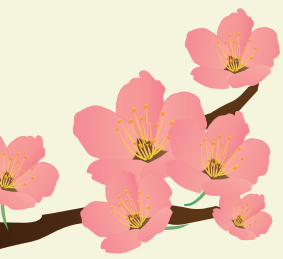




2018  
Guide to the Nihon University  
Japanese Language and  
Japan Studies Program

【NU-JLSP】





# Overview of Nihon University



Nihon University is one of Japan's largest private universities, comprising 12 colleges and 4 schools with 87 departments, 19 graduate schools, 26 attached and affiliated high schools, 14 attached and affiliated junior high schools, an elementary school and a kindergarten.

The university's forerunner, Nihon Law School, was founded in 1889, and since then Nihon University has continued to lead education and research with a consistently global perspective and progressive spirit.

Offering a diverse range of disciplines, as a true university with appeal, Nihon University undertakes various activities such as medical care and lifelong education, in addition to its educational and research activities, with a view to contributing to the further development of society.



## Overview of the Japanese Language and Japan Studies Program (JLSP)

Nihon University offers the Japanese Language and Japan Studies Program (JLSP) to exchange students from overseas universities with which Nihon University has established inter-university exchange agreements. Under the JLSP, international exchange program students undergo short-term intensive Japanese language and cultural/social education. The program offers 3 subjects ; Japanese Language Subject (Comprehensive Japanese / Elective Japanese), Japan Studies Subject (taught in English), and Intercultural Experience Subject, (in which Japanese-speaking volunteers also participate).





# Features of the Japanese Language and Japan Studies Program (JLSP)

**Short-term Intensive Japanese Language Course = 150 hours/50 days**



Approximately two-and-a-half-month period students study comprehensive Japanese language intensively for 150 hours (3 hours per day for 50 days); 150 hours is the basic number of study hours required to advance one level of the Japanese Language Proficiency Test.

**1st [Summer] Term**  
(mid-May to late July)

**2nd [Fall] Term**  
(mid-September to early December)

**3rd [Spring] Term**  
(mid-January to late March)

\* JLSP is a one-term program; the same program is offered three times in an academic year.

## ▣ Japanese Language Course Level Placement = 5 Levels of Comprehensive Japanese Language (Compulsory Courses); 5 Subjects of Elective Japanese Language (Elective Courses)

Students are divided into courses according to the level of their Japanese language proficiency to enable them to study the language efficiently in a short period of time. The 5 compulsory comprehensive Japanese levels (A-E)\* conforms to the study levels for the Japanese Language Proficiency Test.

Elective subjects are designed to focus on "students' direct experience and output" and enhance their autonomous learning.

\*Levels are decided based on the results of a placement test conducted at the beginning of the program.



## ▣ Understanding of Japanese Society/Culture and Intercultural Experience

To enable students to deepen their knowledge and understanding of Japanese society and culture, and also to



raise the awareness of intercultural literacy, the JLSP provides the Japan Studies Subject as well as the Intercultural Experience Subject. In the Japan Studies Subject, students study in English about Japanese economy, Japanese art, issues that modern Japanese society is facing, and Japanese behavioral patterns. In the Intercultural Experience Subject, students experience Japanese society and culture directly using Japanese words and expressions actually used by native speakers and coming into touch with their meaning as well as connotation while interacting with volunteers.

## ▣ Collaboration with Volunteers

Japanese students from Nihon University participate as volunteers in the Intercultural Experience Subject in learning activities both inside and outside the classroom. Through these collaborative activities with volunteers, students deepen their exchange with Japanese people.





# Japanese Language and Japan Studies Program (JLSP) Schedule



## Japanese Language and Japan Studies Program (JLSP) Curriculum

✧ Comprehensive Japanese				Compulsory Subject (5 course levels) Ten classes per week (2 classes per day) are required. (1.5 hours _ 10 classes _ 10 weeks) (1.5 hours _ 2 classes _ 50 days)	The required number of hours of study in the Comprehensive Japanese classes: <u>150</u>
Elementary	A				
Upper- Elementary	B				
Intermediate	C				
Upper-Intermediate	D				
Advanced	E				
✧ Elective Japanese					The required number of hours of study in the Elective Japanese classes : <u>15~60</u>
Communication	CO	Interacting with Japanese volunteers, project work, etc.			
Creation	CR	Expressing your insights into Japanese society through photographs, videos, and writing,etc			
Inquiring	IN	Research aspects of Japanese society that interest you. Interview Japanese people and present results.			
Intercultural Experience	IE	Learn about traditional Japanese culture and other daily culture by direct experience. And present or write reports, etc.			
Autonomous Learning	AL	Determine a specific area to study, by yourself, create a plan, and learn autonomously while being supported by a teacher.			
✧ Japan Studies					The required number of hours of study in the Japan studies classes: <u>42</u>
Japanese Society, Japanese Culture	JS1	4 topics on Japanese Society and Culture (organized in an omnibus fashion)			
	JS2	Japanese Mind and Society			
	JS3	Topics in Contemporary Japanese Society			
✧ Intercultural Experience					The required number of hours of study in the Intercultural Experience: <u>20</u>
Visit to Life Safety Learning Center	Honjo Bōsaikan		Compulsory Subjects 3 hours		
Study Tour	Kamakura or Hakone or Yokohama		11 hours		
Seeing a Kabuki Performance	Kabukiza Theatre (Tokyo)		6 hours		

(Curriculum for 2017 is provided as a reference)

- Total number of hours for studying compulsory subjects: **212**
- Course content is the same for each term.
- Students wishing to study under JLSP for more than one term study only Comprehensive Japanese and Elective Japanese from their 2nd term onwards.
- Comprehensive Japanese and Elective Japanese courses are also attended by international students other than JLSP students.

Although JLSP does not award credits, it offers a high quality educational experience based on the following equivalent credit hours as determined by the Japanese credit system for Japanese Language Program :  
 6 credit hours for Comprehensive Japanese, 2 credit hours for Elective Japanese (1 credit for each elective), and 4 credit hours for Japan Studies (including Intercultural Experience) are assured.



## 5 Week 5-9

Preparation and submission of a manuscript for the semester's commemorative issue

## 6 Week 9



Seeing a Kabuki Performance (Intercultural ExperienceIII)

## 7 Week 10

Final Tests/Course Evaluation Period

## 8 Final Day of Courses

Closing Ceremony/Farewell Party



# Comprehensive Japanese/Elective Japanese

## Comprehensive Japanese

This course comprises compulsory courses aimed at comprehensively raising students' Japanese language reading/writing/listening/speaking proficiency. Courses are divided into 5 levels (A-E) and students study Japanese intensively in small classes of their levels for 150 hours during the term. Up to the Intermediate level, courses are based on textbooks and students comprehensively improve their overall Japanese language proficiency. At the Advanced level, there are separate classes for each language skill (reading/writing/listening/speaking/grammar) and different textbooks and materials are used to enable students to acquire an even higher level of Japanese language proficiency.



Activities outside the classroom and discussions with Japanese-speaking volunteers are conducted to enable students to use and practice the Japanese language skills they have learned.

## Elective Japanese

5 elective subjects ( Communication, Creation, Inquiring, Intercultural Experience, Autonomous



Learning) are placed for academic purposes. Students are able to improve Japanese language proficiency by using Japanese language that you learned in Comprehensive Japanese courses. Japanese volunteers of Nihon University join together. Students are able to choose subjects freely in accordance with their needs and interests.

## Comprehensive Japanese/Elective Japanese Course Level Settings

Comprehensive Japanese Course Level		Elective Japanese Course Level					JLPT  *	CEFR  **
A	Elementary	CO	CR		IE	① AL	N5	A1
B	Upper-Elementary						N4	A2
C	Intermediate			IN		② AL	N3	B1
D	Upper-Intermediate						N2	B2
E	Advanced						N1	C1

\* Placement tests correspond to each level for the Japanese-Language Proficiency Test (JLPT).

\*\* CEF-R (Common European Framework of Reference for Languages):  
a common evaluation standard for the achievements of learners of foreign languages in the European Community.



## Japan Studies

Japan Studies Courses are compulsory courses taught in English, aimed at helping students enhance their knowledge of Japanese society, culture and people and think introspectively about questions they may have. Students attend lectures and participate in discussions on the Japanese culture, Japanese economy and various other subjects.



## Intercultural Experience

The aim of this course is to encourage students to acquire the sense of intercultural literacy as well as global perspective by interacting with their surroundings of things and humans. Intercultural Experience courses are targeted at raising the awareness of students' views on Japanese, their own and friends' cultures and giving the students new perspectives through the following 3 opportunities to actually experience Japanese society and culture while fostering friendship with the volunteers.

### POINT Visit to Life Safety Learning Center

With a view to better understanding Japan's geographical characteristics, students learn about the prevalence of earthquakes, fires, and typhoons in Japan and experience simulations of how to respond in case any of these events occurs.



### POINT Study tour

The aim of this trip is to enable students to come in contact with Japanese history and nature. The tour visits historically significant places such as Hakone, Kamakura or Yokohama, where students can see temples, shrines, and other historical landmarks and experience Zazen meditation and other practices, as well as enjoy viewing volcanic activity, autumn leaves, and other aspects of Japanese nature. During the Study tour, each student is accompanied by a Nihon University student volunteer "buddy" to deepen their cultural exchange.



### POINT Seeing a Kabuki Performance

To enable students to better understand traditional Japanese culture, they attend a performance of Kabuki. Through this experience, students can deepen their understanding of the "sophistication" of traditional Japanese culture and how Japanese people enjoy their culture.

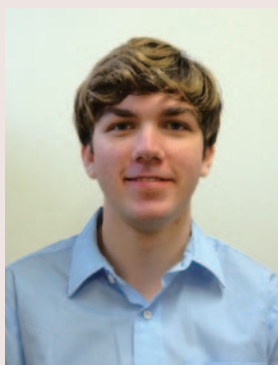


## Class Timetable (Timetable for 2017 is provided as a reference)

	Time	Monday	Tuesday	Wednesday	Thursday	Friday
1	9:00-10:30	Comprehensive Japanese				
2	10:40-12:10	Comprehensive Japanese				
3	13:00-14:30	Japan Studies	Elective Japanese	Japan Studies	Elective Japanese	Intercultural Experience Subjects, Activities
4	14:40-16:10		Elective Japanese	Japan Studies	Elective Japanese	

\*The timetable may change from year to year.

## Messages from Students/Volunteers



**Jordan McGill**  
(University of Alabama at Birmingham,  
United States)

I really appreciated my time at Nihon University participating in the Japanese Language and Japan Studies Program (JLSP) and found my time filled with the many worthwhile experiences that were offered. The language courses are intensive but immensely useful for improving your Japanese, regardless of what level you start at, and the Japanese volunteers in the course, while offering a great opportunity to practice your Japanese in a conversational setting, will also become great friends who will really help you to settle into Tokyo. Elective courses offer opportunities to further your study either culturally or with supplemental classes allowing focused language study, and allow you to choose how much time you spend in class. The Japan Studies courses also offer insight into modern Japanese society and culture through various lectures given by expert speakers from many research fields, and valuable field trips that take you out of the classroom and give you first-hand invaluable experiences of Japan. Various cultural topics are covered, such as Kendo and anime as well as more serious topics like the aging population, and trips to the Disaster Center, Hakone, and a Kabuki performance in Ginza give you a wonderful chance to bond with fellow students and volunteers while having fun learning about Japan in Japan. I would highly recommend this course if your goal is to learn about Japan, experience the culture, and improve your Japanese.





**Saya Okada** (Senior, Department of Commerce, College of Commerce, Nihon University)

The foreign students will meet the Japanese volunteers once a week in their Japanese classes. The volunteers will assist the students with their discussions and pronunciation practices. Moreover, the volunteers often go out with students for lunch and go out to play on holidays. The conversations by all means are conducted in Japanese and the foreign students are given opportunities to learn natural conversational expressions. There are various field trips such as visiting Life Safety Learning Center, seeing Kabuki Plays, and visiting Hakone and the students can learn about Japan while having fun. The students have a chance to become friends with the Japanese volunteers. This makes it easier to ask questions about various aspects of their daily life. Many of our foreign students have appreciated this system. When the students tell us "I am so happy to be in Japan" and "I would like to come back to Japan" it made us very happy. We hope you will have a wonderful experience in Japan and give us such positive responses. Please become good friends with students from all over the world who come to Japan with similar aspirations. The Japanese volunteers welcome you from bottom of our hearts.

## Communication and Networking

### Language Café

The Language Café is open on Friday afternoons when no classes are held.

Foreign students, volunteers, teachers and staffs will be drinking tea and enjoy exchanges using different languages.

### Facebook

Our Japanese Language Program has a Facebook page. We will be regularly uploading about our classes and events.

<https://www.facebook.com/NichidaiJLP/>

## Campus and Accommodations

### Campus (Nihon Daigaku Kaikan Daini Bekkan)

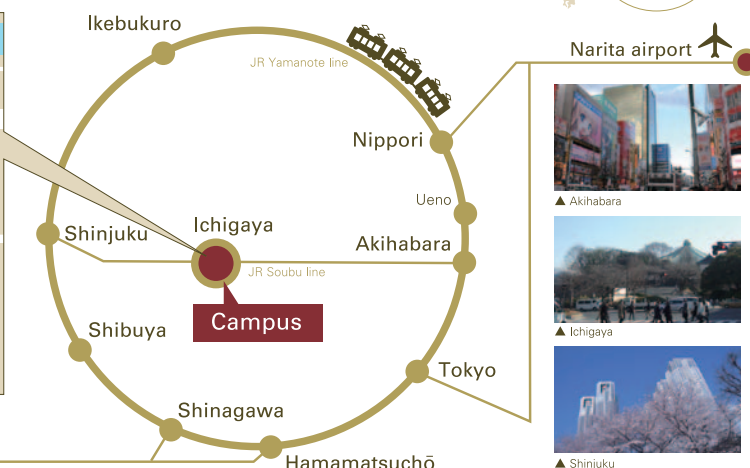
The Nihon University campus where JLSP is conducted is located in Ichigaya (Chiyoda-ku, Tokyo), a central area for Japanese business and commerce. The Nippon Budokan, Yasukuni Shrine, and other well-known sites are located nearby. Moreover, the campus is optimally located for accessing the main areas of Tokyo, with Tokyo Dome, Korakuen amusement park, Akihabara's electronics quarter, and Shinjuku-Fukutoshin sub-center located only 10-15 minutes away by train.



### Accommodations

JLSP students are provided with 2 meals and accommodations (approximately 30 minutes by train from campus) equipped with furniture, bath, shower, telephone, and an Internet connection.

Living expenses in Japan, while differing from person to person, are approximately 60,000~100,000 yen per month.



## Data

International Academic Partnerships: 117 Institutions in 31 Nations and one area (as of 2017 academic year.)

Number of Students	
Graduate	2,889
Undergraduate	74,712
Junior College	778
Special Training Schools	601
High Schools	29,075
Junior High Schools	6,800
Primary School	620
Kindergarten	474
Total	115,949

\*As of May 1, 2017

Number of Teaching and Administrative Staff	Teach.	Admin.	Total
Colleges	2,713	1,362	4,075
Distance Learning Division	12	43	55
Junior College	50	5	55
Special Training Schools	29	3	32
Senior High Schools	554	94	648
Junior High Schools	93	8	101
Primary School	15	1	16
Kindergarten	24	8	32
Hospitals	-	2,219	2,219
Total	3,490	3,743	7,233

\*As of May 1, 2017

Main Partner Universities of JLSP students
University of Cambridge(GBR)*
Stockholm University(SWE)
Free University of Berlin(DEU)
Johannes Gutenberg-University in Mainz(DEU)
L' Université d'Avignon(FRA)
The University of Toronto(CAN)
Western Michigan University(USA)
The University of Alabama at Birmingham(USA)
Aarhus University(DNK)
Nanyang Technological University(SGP)

(and many others)

\*Pembroke College





**International Affairs Division,  
Office of Academic Affairs, Nihon University**

4-8-24 Kudan-Minami, Chiyoda-ku Tokyo, Japan 102-8275

Phone: +81-3-5275-8116 Fax: +81-3-5275-8315 E-mail: [int@nihon-u.ac.jp](mailto:int@nihon-u.ac.jp)

**Japanese Language Program Website**

<http://www.nihon-u.ac.jp/> (in Japanese)

<http://www.nihon-u.ac.jp/en/> (in English)

nu-jlsp

Search

**【cover design】** *Blooming Cherry Blossoms* by Miki Kudo; Department of Design, College of Art, Nihon University

The design was made on the motif of "sakura", a cherry blossom inscribed in the school badge of Nihon University.

The work is meant to give an impression of walking a new path under full-blown cherry blossoms, feeling a gentle breeze in spring.