

**GRIFFITH GLOBAL MOBILITY**  
*2018/2019 Fact Sheet*





## Nomination Process

Eligible students are to be officially nominated to Griffith University by the specified deadline. Please email [inboundmobility@griffith.edu.au](mailto:inboundmobility@griffith.edu.au) with the students':

- Full Name
- Date of Birth
- Student email address
- Academic Level – Undergraduate/Postgraduate
- Trimester of commencement and duration

Once a student nomination has been accepted the Global Mobility Team will extend an invitation for the student to complete our [online application](#).

## Application Documents (What to submit)

- Academic Transcript\*
- [Proof of English Proficiency](#)\* (not required for native English speakers). When viewing requirements on our website please ensure to select the exchange tab.
- Passport

\*Academic transcript and proof of English proficiency must be original or certified copies. These documents must also be certified English translation if original documents are not in English.

**Note:** Students who select fine art, photography, or music courses at the South Bank campus may be required to submit a portfolio or audition files.

## How to Apply

Once a student's nomination is confirmed they will be invited to complete our [online application](#) and upload their supporting documents and course selections by the application deadline. They should not apply until their nomination has been confirmed.

## Important:

Should the number of students who wish to apply to study at Griffith exceed the available places, they are welcome to apply as a [Study Abroad](#) applicant. Respective [tuition fees](#) would apply.



Griffith University operates on a trimester model, offering three trimesters over a 12 month cycle. Dates for 2018/2019 have been confirmed and are outlined below.

### Trimester 2 2018 (July to October)

<b>Nomination deadline:</b>	1 March 2018
<b>Application deadline:</b>	15 April 2018
<b>Preferred arrival date:</b>	One week before orientation
<b>Orientation:</b>	6 July 2018
<b>Classes start:</b>	9 July 2018
<b>Exam period:</b>	11 – 20 October 2018
<b>Student vacation:</b>	22 – 26 October 2018
<b>Departure date:</b>	21 October 2018 or later

### Trimester 2 2019 (July to October)

<b>Nomination deadline:</b>	1 March 2019
<b>Application deadline:</b>	15 April 2019
<b>Preferred arrival date:</b>	One week before orientation
<b>Orientation:</b>	5 July 2019
<b>Classes start:</b>	8 July 2019
<b>Exam period:</b>	10 – 19 October 2019
<b>Student vacation:</b>	21 to 25 October 2019
<b>Departure Date:</b>	20 October 2019 or later

### Trimester 3 2018 (October to February 2019)

<b>Nomination deadline:</b>	1 June 2018
<b>Application deadline:</b>	15 July 2018
<b>Preferred arrival date:</b>	One week before classes start
<b>Orientation:</b>	26 October 2018
<b>Classes start:</b>	29 October 2018
<b>Student vacation:</b>	24 December 2018 – 4 January 2019
<b>Exam period:</b>	7 – 16 February 2019
<b>Departure date:</b>	17 February 2019 or later

### Trimester 3 2019 (October to February 2020)

<b>Nomination deadline:</b>	1 June 2019
<b>Application deadline:</b>	15 July 2019
<b>Preferred arrival date:</b>	One week before orientation
<b>Orientation:</b>	25 October 2019
<b>Classes start:</b>	28 October 2019
<b>Student vacation:</b>	23 December 2019 to 3 January 2020
<b>Exam period:</b>	6 to 15 February 2020
<b>Departure Date:</b>	16 February 2020 or later

### Trimester 1 2019 (February to June)

<b>Nomination deadline:</b>	1 September 2018
<b>Application deadline:</b>	15 October 2018
<b>Preferred arrival date:</b>	One week before classes start
<b>Orientation:</b>	22 February 2019
<b>Classes start:</b>	25 February 2019
<b>Student vacation:</b>	15 – 19 April 2019
<b>Exam period:</b>	30 May – to 8 June 2019
<b>Departure date:</b>	9 June 2019 or later

Courses offered in Trimester 3 can be taught in intensive and/or mixed mode and some are only available online.

## Study Areas

<b>Business:</b>	Accounting, Asian & International Studies, Economics, Employment Relations, Entrepreneurship, Event Management, Government & International Relations, Human Resource Management, International Business, Tourism and Hotel Management, Logistics and Supply Chain Management, Management, Marketing, Politics and Public Policy, Sport Management, Sustainable Enterprise, Sustainable Tourism Management, Real Estate & Property Development
<b>Arts, Education, Law:</b>	Animation, Art Theory, Design, Digital Media, Fashion Design, Fine Art, Games Design, Industrial Design, Photography, Music Composition, Music Technology, Musical Theatre, Performance, Popular Music, Health & Physical Education, Music Education, Primary Education, Secondary Education, Special and Inclusive Education, Australian & Indigenous Studies, Creative Writing & Literature, Islam-West Relations, Journalism, Japanese, Chinese, Spanish, Italian, Linguistics, Media & Communications, Public Relations, Screen Studies & Production, Social Sciences, Criminology, Criminal Justice, Law
<b>Sciences:</b>	Climate Change & Adaptations, Ecology & Conservation Biology, Environmental Health, Environmental Management, Environmental Planning, Environmental Protection & Pollution, Environmental Science, Environmental Sustainability, Water Resources, Architecture, Applied Mathematics, Aquatic Systems, Aviation & Aviation Management, Bioinformatics, Biochemistry & Molecular Biology, Chemistry, Marine Biology, Microbiology, Nanoscience & Physics, Wildlife Biology, Civil Engineering, Computer Science, Electrical & Electronic Engineering, Energy Engineering, Engineering Management, Computer engineering, Biomedical Endangering, Environmental Engineering, Industrial Design, Information Technology, Mechanical Engineering, Mechatronic Engineering, Microelectronic Engineering, Multimedia
<b>Health:</b>	Biomedical Sciences, Exercise Science, Human Services, Medical Science, Nursing, Nutrition, Psychology, Public Health, Social Work

## Credit Point System

A standard course at Griffith is 10 credit points and is considered to equate to approximately 10 hours per week, including all forms of teaching contact and private study. A typical full-time study load at Griffith is 40 credit points.

Approximate credit point translations:

- 10 credit points = 3-4 credits in the USA System
- 10 credit points = 7.5 ECTS in the European System

\*Please note this should be used as a guide only.

## Course Selection

### Search for a specific course (subject)

1. Visit the [online Degree and Career Finder](#)
2. Select the 'courses' button
3. Enter a keyword (For example, "marketing" or "engineering")
4. Filter the results if required
5. Search

### Search by degree program

[Business and government](#)

[Criminology and law](#)

[Education](#)

[Engineering and IT](#)

[Environment, planning and architecture](#)

[Health](#)

[Humanities, social sciences and languages](#)

[Music](#)

[Science and aviation](#)

[Visual and creative art](#)

**Please Note:** Most undergraduate and postgraduate courses offered at Griffith University are available to inbound students, with some restrictions. Students can select courses from the pre-approved course lists, which means that a Course Approval Report will only be issued for courses which require convener approval. If a course is not on the pre-approved list, please provide the students' certified official academic transcript which will be used to assess whether they meet any prerequisite requirements for each course. If further information is required to make this assessment, such as detailed course profiles, then we will notify you.

\*Please note, to undertake criminology, education or 2000+ level law courses the student must be majoring in this area at their home university.

## Campus

Griffith University has five campuses across the Gold Coast and Brisbane cities.

<b>South Bank:</b>	Located in the city is home to the Queensland College of Art and the Queensland Conservatorium of Music. South Bank offers courses in Fine Art, Photography, Animation, Film, and Music.
<b>Nathan:</b>	Located about 20 minutes from Brisbane city centre by bus and hosts a comprehensive range of courses including Business, Science, and Health.
<b>Mt Gravatt:</b>	5 minutes from the Nathan campus (there is a free intercampus bus to Nathan). Mt Gravatt offers courses in Education, Psychology, Criminology and Criminal Justice.
<b>Logan:</b>	A semi-rural campus about 30 minutes from Brisbane and also from the Gold Coast. Offers IT, Business, Human Services (Social Work & Rehabilitation). This campus is not recommended due to its isolated location.
<b>Gold Coast:</b>	One hour drive south of Brisbane city. This campus had the most comprehensive range of study areas and courses. It is Griffith University's biggest campus.

## Accommodation

<b>On-campus:</b>	<p>On-campus accommodation is available at the Nathan, Mt Gravatt and Gold Coast campuses. There are limited spaces, therefore it is recommended to apply as soon as you have received your Offer Letter from Griffith University.</p> <p><b>Nathan &amp; Mt Gravatt</b> Catered and self-catered options are available. 6, 7 or 8 bedroom fully furnished co-educational flat. You will have your own lockable bedroom and share a kitchen, dining/lounge room and bathrooms facilities with your flatmates. Please refer to <a href="http://griffith.edu.au/accommodation/on-campus">griffith.edu.au/accommodation/on-campus</a> for more information.</p> <p><b>Gold Coast</b> Self-catered option only. 1, 2 or 5 bedroom fully furnished apartments available. You will have your own bedroom and share a kitchen, dining/lounge room and bathrooms facilities with your flatmates. Please refer to <a href="http://griffithuv.com.au">griffithuv.com.au</a> for more information.</p>
<b>Off-campus:</b>	<p><a href="#">Off-campus accommodation</a> is the most popular choice for Griffith University students. It is often cheaper and there are more options, however it often requires more research and responsibility.</p> <p><b>Rent per week:</b> \$130 – \$180 (guide only) depending on range of factors</p>
<b>Useful Links</b>	<p><a href="http://griffith.edu.au/accommodation">griffith.edu.au/accommodation</a></p> <p><a href="http://griffithuv.com.au">griffithuv.com.au</a> (Gold Coast only)</p> <p><a href="http://gugcstudentguild.com.au/accommodation">gugcstudentguild.com.au/accommodation</a> (Gold Coast only)</p>

## Overseas Student Health Cover (OSHC) Insurance

All students are required to have OSHC as a condition of their Australian student visa. OSHC will be arranged through Allianz Global Assistance, Griffith University's preferred provider, and included in the Offer Letter. Students will be required to pay an OSHC fee to Griffith University at the time of accepting offer.

Students who are citizens of Norway and Belgium are normally exempt from paying OSHC under a mutual government arrangement.

## Living Expenses

It is recommended for students to have access to at least AUD\$10,000 per trimester to cover living expenses. This estimate varies significantly depending on lifestyle choices, for example accommodation, utilities, mode of transport, eating out.

## Visa Information

Although it is the student's responsibility to ensure they apply for the correct visa and comply with the conditions, Griffith Global Mobility can assist by directing students to the Department of Home Affairs (HA) website for assistance:

[homeaffairs.gov.au](http://homeaffairs.gov.au)

## Useful Links

<b>Visa Information</b>	<a href="http://homeaffairs.gov.au">homeaffairs.gov.au</a> <a href="http://griffith.edu.au/international/prepare-for-study">griffith.edu.au/international/prepare-for-study</a>
<b>Websites for further local information about the city/town university area</b>	<a href="http://griffith.edu.au/international">griffith.edu.au/international</a> <a href="http://tq.com.au">tq.com.au</a> <a href="http://visitgoldcoast.com">visitgoldcoast.com</a> <a href="http://visitbrisbane.com.au">visitbrisbane.com.au</a> <a href="http://studygoldcoast.org.au">studygoldcoast.org.au</a> <a href="http://choosebrisbane.com.au">choosebrisbane.com.au</a>
<b>Website for Study Abroad and Exchange</b>	<a href="http://griffith.edu.au/international/study-abroad-exchange">griffith.edu.au/international/study-abroad-exchange</a>
<b>Web link for Exchange Application online form</b>	<a href="http://griffith.edu.au/international/study-abroad-exchange/future-students/apply">griffith.edu.au/international/study-abroad-exchange/future-students/apply</a>
<b>Web link for Study Abroad Application online form</b>	<a href="http://griffith.edu.au/international/study-abroad-exchange/future-students/apply">griffith.edu.au/international/study-abroad-exchange/future-students/apply</a>
<b>Prepare for study</b>	<a href="http://griffith.edu.au/international/prepare-for-study">griffith.edu.au/international/prepare-for-study</a>

## Key Contacts



**Julie Lambert**

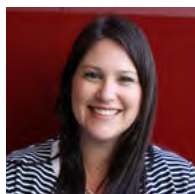
Manager, Griffith Global Mobility  
[julie.lambert@griffith.edu.au](mailto:julie.lambert@griffith.edu.au)

## Inbound



**Nicola Barr**

Global Mobility Coordinator (Inbound)



**Alicia Pawluk**

Global Mobility Advisor (Part time)



**Stacey Bigg**

Global Mobility Advisor (Part time)



**Renee Gleeson**

Global Mobility Advisor (Part time)

## Outbound



**Rebecca Cozens**

Global Mobility Coordinator (Outbound)



**Meghan Lawrence**

Global Mobility Advisor (Outbound)



**Melissa Garcia**

Global Mobility Advisor (Outbound)

E: [inboundmobility@griffith.edu.au](mailto:inboundmobility@griffith.edu.au)

E: [outboundmobility@griffith.edu.au](mailto:outboundmobility@griffith.edu.au)

## Emergency Contacts

For partner students studying at Griffith please call: **+61 418 159 419**

For Griffith students studying at a partner please call: **+61 429 347 388 OR +61 417 153 978**